

Labour Market Information

Warehouse and Logistics Sector

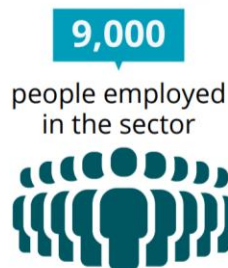


Sector Overview

Industry
Warehouse, Logistics and Supply Chain
Local Focus
Walsall, Black Country and West Midlands
Key Areas
Warehousing, transportation, e-commerce fulfilment, stock control, distribution centres
Current Outlook
Continued growth due to e-commerce demand, just-in-time supply chain models and regional connectivity (Motorway connections). Night shifts, flexible hours and seasonal work are common. Increasing automation may reduce future career opportunities.



Sector employee jobs¹



West Midlands: 6.1%
England: 5.0%

Key Job Roles and Entry Points

Entry-Level	Mid-Level / Skilled Roles	Advanced / Managerial
Warehouse Operative	Forklift Driver (FLT)	Warehouse Team Leader
Picker / Packer	Stock Controller	Logistics Supervisor
Parcel Sorter	Delivery Driver (Van)	Distribution Centre Manager
Loader / Unloader	Inventory Coordinator	Transport/Logistics Manager
Apprentice (Supply Chain)	Route Planner	Operations Manager

Qualifications and Training

Role Type	Typical Qualification / Courses
Entry Level	Warehouse Induction Training, Manual Handling, Basic English & Maths
Skilled Roles	FLT Licence (Counterbalance/Reach), Level 2 in Warehousing & Storage, HGV Licence
Management	Level 3-5 in Logistics Operations, ILM Qualifications, Transport Manager CPC

Local Providers in Walsall

- Walsall College
- Performance Through People
- GTG Training

Local Employers in Walsall

Employer	Roles Available	Contact
TJX Europe	Pickers/Packers - FLT	lauren.howell@staffline.co.uk www.jobs.tjx.com
One Stop	Warehouse Operatives – FLT -HGV Drivers	chloe.hopkins@onestop.co.uk www.onestop.co.uk
AF Blakemore	Warehouse Operatives/Refrigeration/Drivers/FLT	Cdoyle@afblakemore.co.uk www.afblakemore.com/careers/spar-careers

Pathways



Salary and Progression Information

Role	Typical Pay in Walsall
Warehouse Operative	£19,000 – £22,000 (shift-dependent)
Forklift Truck Driver	£21,000 – £25,000
Stock Controller / Delivery Driver	£24,000 – £27,000
Warehouse Supervisor	£28,000 – £32,000
Depot / Operations Manager	£35,000 – £50,000+

Shift work often includes overtime or enhancements. Qualifications and experience drive progression and higher salaries.

Current Opportunities and Growth Areas

- High demand for pickers, packers, and FLT drivers, especially in retail and e-commerce hubs
- Growth in delivery and logistics planning roles with increasing use of route tech and planning software
- Regional investment in transport and logistics hubs (e.g., near M6 corridor)
- Environmental focus on eco-logistics and electric fleet driving future roles
- Many companies offer apprenticeship progression routes from operative to team leader

Tips for Progression

- Gain your FLT licence or upgrade it to improve access to higher-paid roles
- Use an apprenticeship to move from operative into planner or team lead roles
- Focus on building reliability, numeracy, and digital stock system experience
- Learn to use common software (e.g., handheld scanners, inventory systems)
- Highlight punctuality, teamwork and flexibility when applying
- Keep certificates and licences updated and ready to show employers

Useful Links and Contacts

- [Logistics UK](#) – Sector insights and training
- [National Careers Service](#)
- Walsall College: www.walsallcollege.ac.uk
- [Indeed](#), [TotalJobs](#) – Local job boards

Last updated: June 2025