

Labour Market Information

Engineering & Manufacturing Sector

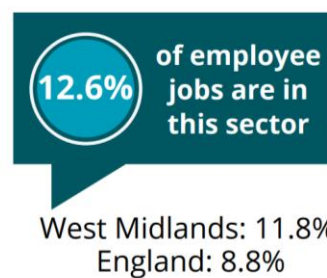
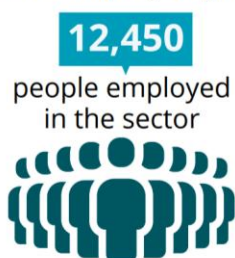


Sector Overview

Industry
Engineering and Manufacturing
Local Focus
Walsall and wider West Midlands
Key Areas
<ul style="list-style-type: none"> • Precision engineering and metal fabrication • Automotive and Aerospace component manufacturing • Electrical and electronic systems • CNC machining and toolmaking • Robotics and automation • Product design and prototyping • Maintenance and repair of industrial equipment • Smart Manufacturing and Industry 4.0 technologies
Current Outlook
<p>The Manufacturing and Engineering sector in Walsall is a vital part of the local economy, encompassing a wide range of industries including automotive, aerospace, metal fabrication, electronics and advanced manufacturing. The sector is evolving with the integration of digital technologies and automation, offering diverse career opportunities.</p>



Sector employee jobs¹



Key Job Roles and Entry Points

Entry-Level	Mid-Level / Skilled Trades	Advanced / Technical
Production Operative	CNC Machinist	Manufacturing Engineer
Engineering Apprentice	Maintenance Technician	Mechanical Engineer
Assembly Line Worker	Toolmaker	Electrical / Electronic Engineer
Machine Operator	Fabricator / Welder	CAD / CAM Engineer
Quality Control Assistant	Mechatronics Technician	Robotics / Automation Engineer

Qualifications and Training

Role Type	Typical Qualification / Courses
Entry Level	Level 2 Certificate in Manufacturing, Engineering Operative Training, Health and Safety Awareness
Skilled Trades	NVQ Level 2 in Engineering or Manufacturing, Apprenticeships, Technical Certificates (AutoCAD, Welding)
Technical/Manager	HNC/HND in Mechanical/Electrical Engineering, Degree in Engineering, Lean Manufacturing, CAD/CAM, PLC Programming

Local Providers in Walsall

- Walsall College (Engineering and Manufacturing Campus)
- Performance through People (PTP Training)
- In-Comm Training Services

Local Employers in Walsall

Employer	Roles Available	Contact
Babcock International	Production operative, manager, specialists	www.babcockinternational.com/careers careers@babcockinternational.com
CNC Speedwell	Production and prototype machinists	01543 363880 www.cncspeedwell.co.uk/
Hydratight	Toolmaking and speciality mechanical	www.careers.enerpactoolgroup.com/careers 0121 505 0600

Pathways



Salary and Progression Information

Role	Typical Pay in Walsall
Production Operative / Apprentice	£18,000 – £24,000
Skilled Technician	£25,000 – £35,000
Engineers	£30,000 – £50,000+
Senior / Managerial	£45,000 – £70,000

Progression is supported by gaining qualifications, experience and specialisms such as automation or design.

Current Opportunities and Growth Areas

- Demand for skilled engineers and technicians in automation, robotics and digital manufacturing
- Growth in green technologies and electric vehicle production
- Investment in advanced manufacturing and R&D
- Opportunities in aerospace, automotive, and electronics sectors
- Emphasis on Industry 4.0 and smart manufacturing

Tips for Progression

- Start with a relevant apprenticeship or college course
- Gain hands-on experience through placements or part-time work
- Build a portfolio of projects and certifications
- Join professional bodies like IET or IMechE
- Stay updated with new technologies and software
- Consider higher education or degree apprenticeships for advancement

Useful Links and Contacts

National Careers Service: www.nationalcareers.service.gov.uk

Walsall College – Engineering Courses: www.walsallcollege.ac.uk

Tomorrow's Engineers: www.tomorrowsengineers.org.uk

Institute of Engineering and Technology: www.theiet.org

Apprenticeships: www.apprenticeships.gov.uk

Last updated: July 2025