

Walsall SEND Service

Newsletter



Walsall Council

SUMMER TERM 2025

WELCOME TO THE WALSALL SEND SERVICE SUMMER TERM NEWSLETTER

This newsletter is designed for parents and carers of children and young people with Special Educational Needs and Disabilities (SEND). Here, we share important updates, celebrate successes, and highlight opportunities for you to engage with and shape SEND services in Walsall. We are committed to working together to improve support, services, and outcomes for children and young people with SEND. Your voice matters, and we welcome your feedback and involvement.

ARE YOU ON OUR MAILING LIST?

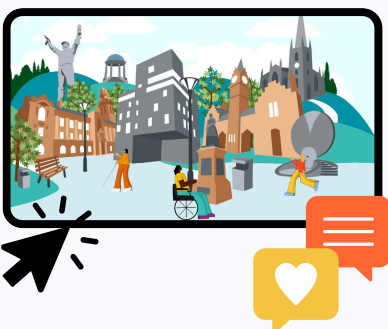


Stay up to date with the latest SEND news, updates, and events in Walsall by joining our mailing list. If you are not already receiving our emails, please contact: localoffer@walsall.gov.uk

CELEBRATING SUCCESS

- The Parent Partnership Group has been having some great discussions around what parents would like to see on the Local Offer, sharing their feedback and ideas on how to make the website more accessible and easier to navigate.

TIME TO
Celebrate



We are always looking to get more feedback about our services and the Local Offer. Please get in touch with Sam on: localoffer@walsall.gov.uk to get involved in shaping the future of the Local Offer and Walsall SEND Services.

CELEBRATING SUCCESS CONT.

- FACE Walsall teamed up with the Walsall SEN team to hold 'Meet The Team' events in each of the locality Family hubs, where parents/ carers had an opportunity to meet SEN Casework Officers from the team and talk about the team structure, job roles and experiences. Parents/carers who attended said they found this helpful and understood more about what the team does.
- We're excited to share the successful launch of the Supported Waiting parent network meetings in Walsall!

These monthly, themed, face-to-face sessions began in April and are already proving to be a valuable support for families with children on any paediatric waiting list. Our first two events were a fantastic success, with positive feedback from families who appreciated the chance to connect with others and speak directly to professionals.

Each monthly meeting will be held on the **Last Wednesday** of the month at **Manor Farm Community Association, Rushall, WS4 1EU.**

The next one is on **Wednesday 25th June from 9:30am - 11:30am** and focuses on summer holiday survival.



For more information or further advice please call: 01922 656463 or email [**pals.officer@nhs.net**](mailto:pals.officer@nhs.net)



EHCP PHASE TRANSFER PARENT PREFERENCE FORMS

The School Place preference form is for parents of children with an Education, Health and Care Plan (EHCP) who are attending a mainstream school placement and moving into their next phase of education (phase transfer).

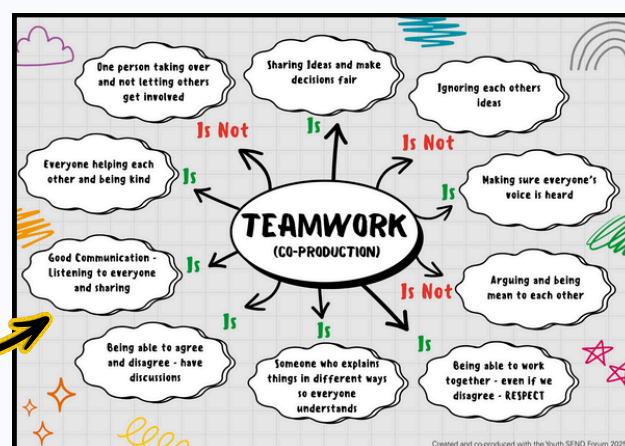
You will be receiving this email as we recognise your child will be moving into the next phase of their education in **September 2026**. Please see phases of educations in the table below

Phase Transfer	School Years
Early Years Phase Transfer	Nursery to Reception
Primary Phase Transfer	Year 2 to Year 3
Secondary Phase Transfer	Year 6 to Year 7
Post 16 Phase Transfer	Year 11 to Post 16 (college or sixth form)

We urge parents/carers to complete this **as soon as possible**. The form should be completed by the beginning of **July 2025**. This will then ensure that there is adequate time to consult with settings and schools.

YOUTH SEND FORUM!

At the first Youth SEND Forum on 10th April , the group shared thoughtful ideas about what makes a great team, such as listening to each other and sharing ideas, and what can make teamwork difficult – like arguments or when one person takes over. Have a look at what we created!



At the Youth SEND Forum on 5th June, the group took a look at the Local Offer — what it looks like now, what they like about it, and what could be better. They shared some brilliant ideas for making it more young person-friendly, and we'll be adding these to our ongoing action plan to keep improving the Local Offer.

The next Youth SEND Forum is on **Thursday 17th July @ 5:30pm**. If you know of any young people Year 4 - Year 11 that would like to get involved please contact [Sam](#).

CO-PRODUCTION - PREPARATION FOR ADULTHOOD

In May 2025, we held a follow-up session for our Preparation for Adulthood (PfA) work, building on the valuable discussions from our initial event in April. This session provided an opportunity to reflect on our collective strengths, identify key areas for improvement, and review the progress made so far.

The session brought together partners from **health, social care, education, parents and the Local Authority**, all working collaboratively to shape the next steps. Together, we focused on developing a clear and practical set of recommendations to support a more joined-up PfA pathway across the partnership.



Our **shared aim** is to ensure that children and young people with SEND are well-supported as they transition into adulthood, with positive outcomes across education, employment, independent living, health, and community inclusion.

We look forward to continuing this joint work and driving forward improvements in the months ahead.

HEALTH SUPPORT

SPEECH & LANGUAGE THERAPY (SALT) DROP INS

Do you have questions about your child's speech or language development?

Are you worried that your child is not talking or does not understand you?

Would you like some advice on general strategies to help?

If you're worried about your child's communication skills and your child is not already known to our service, please come to one of our drop-in sessions for advice and support.

Thursday 12th June
9:30-11:30am
South Family Hub
WS2 8NF

Tuesday 24th June
10am - 1:30pm
Oak Park Leisure
Centre
WS9 9PQ

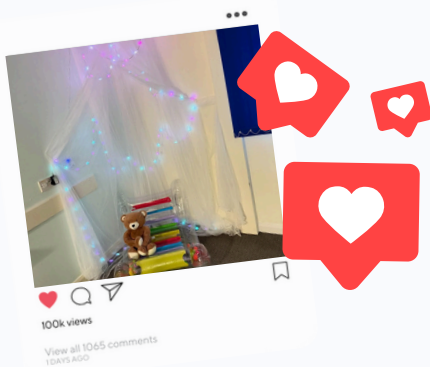
Wednesday
16th July
VIRTUAL

For more info, email the SaLT team: walsall.slt@nhs.net or
call: 01922 605400

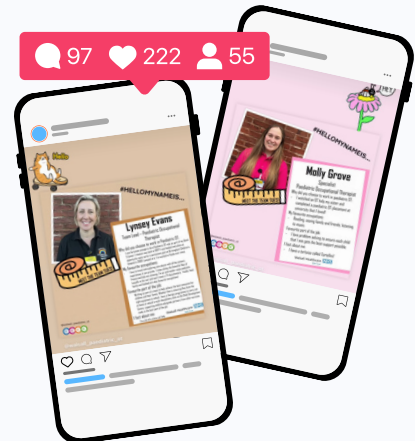
HEALTH SUPPORT

PAEDIATRIC OCCUPATIONAL THERAPY TEAM HAS INSTAGRAM

Our Paediatric Occupational Therapy (OT) team now have Instagram! Check out who is who in the Walsall Paediatric OT Team



WALSALL_PAEDIATRIC_OT



HEALTH ADVICE & SUPPORT FROM PHARMACIES

Did you know that you can get support and advice from a pharmacy registered on the Pharmacy First initiative, if your child is displaying symptoms of the 7 common conditions?

If you are worried about your child and can't get a Dr's appointment or they won't cope in a GP surgery environment, this service may be able to support you.

The Pharmacy First service can support with 7 of the most common conditions:

Clinical pathway	Age range
Acute otitis media*	1 to 17 years
Impetigo	1 year and over
Infected insect bites	1 year and over
Shingles	18 years and over
Sinusitis	12 years and over
Sore throat	5 years and over
Uncomplicated urinary tract infections	Women 16-64 years

Patients can access the 7 clinical pathways element via referrals from referring organisations including:

- GP's
- Urgent and emergency care settings
- NHS 111 (online and via telephone).

For more information on which pharmacies are involved contact your GP surgery or Doctor you are registered with.

PARENT/CARER SUPPORT

It can be very daunting if your child has been given a diagnosis of autism, become part of our group and meet with other people all going through the same fears, problems & experiences you are.



**COLLINGWOOD
AUTISM SUPPORT
GROUP**

COLLINGWOOD CENTRE,
COLLINGWOOD DRIVE, GREAT BARR,
BIRMINGHAM, B43 7NF

TEL: 07823 333910/0121 360 1484

Tuesdays 7 – 9pm

Listen to other people's experiences dealing with nurseries, schools and speech & language groups to name a few.

For more in please call Jo on 0121 360 1484 or find them on Facebook: [Collingwood](#)

BLACK COUNTRY HELPING HANDS MAKING CONNECTIONS EVENT



Black Country Helping Hands Making Connection Event: You're invited!

Black Country Helping Hands: Working together, supporting and celebrating Neurodivergence across our communities in the Black Country.

Family Action are excited to celebrate the success of our Helping Hands service, offering support to understand and meet individual behavioural needs of our Neurodivergent families and those starting their journeys.

Due to continued investment & support from Health and NHS funders across the Black country and support from partners, we were in a position to grow and develop the service over the past nine years. Formally known as Helping Hands Black Country, we will now be Black Country Helping Hands.

With support from the Lottery Fund we are excited to announce we have secured 3 years funding to deliver the service across the Black Country. The additional resources will allow us the opportunity to grow, develop and deliver additional workshops. We would love for you to be apart of our onward journey, and join us to celebrate Neurodivergence:

Join us and be a part of our journey.



Scan for more info on our service.

 Tuesday 8th July 10:00am -12:00pm

 RSPB Sandwell, Tanhouse Ave, Birmingham, B43 5AG (PARKING IS FREE DURING EVENT)

 helpinghandsbc@family-action.org.uk



family-action.org.uk

Family Action, Registered as a Charity in England & Wales no: 264713

Black Country Helping Hands support parents and carers navigate the world of additional needs through understanding behaviours, creating strategies and sharing lived experience.

Black Country Helping Hands are excited to announce their 'Making Connection' event.

When: Tuesday 8th July

Time: 10am - 12pm

Where: RSPB Sandwell, Tanhouse Ave, B'ham, B43 5AG

for more info contact Family Action on:

[HelpingHands](#)

PARENT/CARER SUPPORT

 The Challenging Behaviour Foundation

FORWARD TOGETHER

Improving the lives of people with severe or profound learning disabilities and behaviours that challenge, and their families, by building regional networks



The Forward Together project is working within three areas of England: Kent and Medway, the Black Country, and Salford and Manchester.

This project aims to:

- Bring together family carers and local support and services and making sure your voices are heard.
- Share training and best practice.
- Shape services and future practice through lived experiences.
- Give families access to information, support and opportunities to connect with others.

This project will focus on **4 key communities of families** supporting a relative with severe / profound learning disabilities whose behaviour challenges...



As part of the Challenging Behaviour Foundation team, a family carer in each area will support the development of a regional network.

If you're interested in being a part of this project, please scan this QR code to sign up to join the regional network in your area



The Challenging Behaviour Foundation are looking for parents/carers to get involved with a new project they have launched:

FORWARD TOGETHER

They are specifically looking for parents/carers of children/young people with **severe/ profound learning disabilities** whose **behaviour challenges**,

If you think this project is for you or you know someone who would be interested, please use the QR code on the left to sign up or use this link:

ForwardTogether

THE WITHERSLACK SUMMER VIRTUAL CONFERENCE



Virtual SEN Conference: Strategies To Support Behaviour & Mental Health

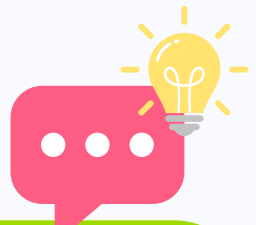
This conference is aimed at parents and carers, and will take place on

Wednesday 25th June - 10am-3pm

for more info use this link:

Witherslack

**SUPPORT
SUPPORT
SUPPORT**



Walsall SENDIASS Drop in sessions



Do you have a child with Special Educational Needs?
Do you have any questions about Education, Health and Care plans?, the law on SEND? mediation, appeals and tribunals, meetings with school?
Then come along to one of our monthly drop-in sessions:

Tuesday 20th May 2025 1-2pm at East Family Hub, 13 Silver Court, Brownhills, WS8 6HA

Thursday 19th June 2025 1-2pm, South and Central Family Hub, Birchills Street, WS2 8NG

Monday 14th July 2025 1-2pm Manor Farm Community Association, Rushall, WS4 1EU



Any questions contact us on Walsallsendiass@family-action.org.uk

CHILDREN/YOUNG PERSON OPPORTUNITIES

KIC RADIO - AMPLIFYING YOUTH VOICES



Join KIC Radio and Be Part of Something BIG!

KIC Radio is a national youth radio station dedicated to empowering young people across the West Midlands.

Our brand-new youth radio network will address the challenges young people face today while providing a dynamic platform to explore the world of radio and media.

Whether you're passionate about broadcasting or the creative industries, KIC Radio is your gateway to new skills, experiences, and opportunities.

For more info visit [KicRadio](https://www.kicradio.co.uk)



YOUTH SEND FORUM

YOUTH SEND FORUM

We're looking for amazing young people in **Year 4 or above** who have **Special Educational Needs (SEND)** to join our **Youth SEND Forum**.

If you enjoy sharing ideas and want to help improve SEND services, we'd love for you to get involved!



Are you a young person with SEND who wants to have a say in the services and support available in Walsall?

Get in touch with Samantha House, Local Offer & Engagement Lead, at

localoffer@walsall.gov.uk to sign up or find out more!

VOLUNTEER IT YOURSELF (VIY) - YOUTH VOLUNTEERING OPPORTUNITIES

VIY combines DIY and volunteering (VIY!) by challenging young people aged 14-24 to help repair and refurbish community places and spaces, whilst learning vocational trade skills on the job.

VIY learners are mentored by professional tradespeople and can work towards and gain Entry Level City & Guilds trade skills accreditation. We work with young people who are not in education, employment or training (NEET) or at risk of disengagement/exclusion from mainstream education and training, inclusive of young people with SEND.

For more info in how to get involved check out their website: [VIY](https://www.teamviy.com) or contact Jess directly on: jess@teamviy.com



CHILDREN/YOUNG PERSON OPPORTUNITIES

HAF PROGRAMME

SUMMER PORTAL GOES LIVE: **THURSDAY 26TH JUNE @ 10AM**

Summer Offer Dates: 28/07/25 - 01/08/25, 04/08/25 - 08/08/25, 11/08/25 - 15/08/25, 18/08/25 - 22/08/25

We have a range of activities that may include: Bowling, Cinema, Summer Sensory Sessions, Swimming & Adventurous Activities.

To register your child onto the Walsall HAF Programme, you must first have an individual HAF code (one for each child). You only need one code to access all the programmes and you will only need to register once for each child.

If you have not received a letter, you can always contact the HAF team via: wr4c@walsall.gov.uk

If the child is eligible or you are unsure and the HAF team will then create and email the unique code.



SHORT BREAKS provide opportunities for children and young people with a disability to spend time away from their families, relax, develop new friendships, take part in new experiences, and have fun doing positive activities. They also give families a break from their caring responsibilities, a chance to rest or spend time with their other children.

The **Universal offer** can include activities like leisure and sports services, youth and play services, voluntary and community facilities and sports and games clubs

The **Targeted offer** - School Holiday activities, to access this, children and young people should:

- be aged from 8 to 17 years old (up to their 18th birthday)
- live in Walsall
- have a diagnosed disability and
- be in receipt of disability living allowance (DLA)
- An up-to-date short breaks passport (reviewed and updated within the last 12 months) is required to access the service, to ensure we have the right information for the planning of activities and support for our children and young people

The Short Break booklet and expression of interest online form for the activity schemes for every holiday (excluding Christmas) is available six weeks before each school holiday. For information on how to sign up please email: shortbreaks@walsall.gov.uk



CHILDREN/YOUNG PERSON OPPORTUNITIES

P.O.P
POSITIVE OUTCOMES PROJECT

BLOXWICH COMMUNITY PARTNERSHIP
Walsall Council

SEND Support Group

Arts & Crafts
Games & Quizzes
Socialise in a Quiet Space

Every Tuesday
2.30pm - 4:00pm
Ages 15-25

Stan Ball Centre, Abbotts Street,
Bloxwich
WS3 3AZ

Facebook Instagram popwalsall.co.uk TikTok YouTube

FUNKY TEENS
For families affected by hearing loss, their siblings & friends

GYM SESSIONS
CHILDREN AGED 11-21 YEARS

DO YOU WANT TO IMPROVE YOUR FITNESS, SOCIALISE MORE, MAKE NEW FRIENDS IN A FUN & FRIENDLY ENVIRONMENT?

THEN JOIN OUR COACH - CHAIR OF FUNYKIDS - ROBERT CARTER



EVENTS

AUTISM INFORMATION & COMMUNITY FUNDAY



At the **COLLINGWOOD CENTRE**,
Collingwood Drive, Great Barr, Birmingham, B43 7NF

SATURDAY 12TH JULY

10am-2pm FREE EVENT

EVERYONE WELCOME Stalls Information Stands
FAIR RIDES raffle **BALLOON MODELLING**
ANIMALS & DINOSAUR EXHIBITION
Face painting **SIDE STALLS** **TOMBOLA**



The day is to raise acceptance of Autism and other related disabilities and for those who want to find out more information and to also bring the community together

The Collingwood Autism Support Group held here every Tuesday 7-9pm for more information please call Joanne 0121 360 1484

Supported by Walsall Council & [FACE WALSALL](http://FACEWALSALL.co.uk)

COLLINGWOOD AUTISM INFORMATION & COMMUNITY FUN-DAY!

Come along to the Collingwood Centre for our Community Funday!

There will be a range of services for both **Walsall and Birmingham** families, information stands, and a variety of activities to do and things to make with your family,

Entry is **FREE!**

When: Saturday 12th July - 10am-2pm

Where: The Collingwood Centre,
Collingwood Drive, Great Barr, B'ham, B45 7NF

EVENTS



SEND INFORMATION FAIR - FRIDAY 20TH JUNE

Come and meet a range of services and professionals from the Walsall SEND Community

This event is designed for parent/carers to come along and to be able to chat to those who offer services to our children/ young people in Walsall

When - Friday 20th June - 10am - 12pm

Where - Bloxwich Active Living, High St, Bloxwich, Walsall WS3 2DA

SASSY SENSORY FUNDRAISING ACTIVITY DAY!

When: Saturday, 21st June - 11:30am – 3:30pm

Where: McDonald's Bentley Bridge Leisure Park, Wednesfield, Wolverhampton, WV11 1BP

Come and join in the sensory play, fun activities and meet Bluey.

Sassy would love for you to drop by, join the fun, and help them celebrate.



THE AUTISM & ADHD SHOW - SATURDAY 27TH & SUNDAY 28TH JUNE



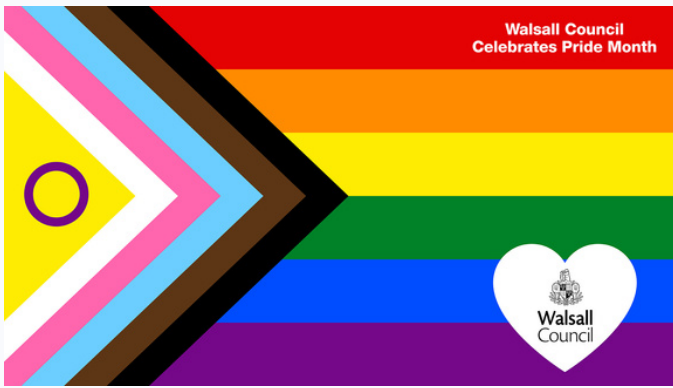
The show gives access to trusted information and advice to help you support an autistic or ADHD person.

Visitors can gain access to a variety of different services and support through one to one clinics and practical workshops.

For more information use this link: [Autism&ADHD](#)



HAPPY PRIDE MONTH!



At Walsall Council, we are proud to stand in solidarity with our LGBTQIA+ colleagues, residents, and communities.

Pride Month is not just a celebration; it's also a reminder of the importance of visibility, acceptance, and respect – values that are at the heart of our organisation.

SEND SERVICES FEEDBACK

Please could you spare a few minutes to complete this feedback form on your experience with the SEND Services. Please use the QR code or link below. Your feedback is greatly appreciated.

[SENDSERVICEFeedback](#)



FEEDBACK

If you have any feedback or wish something to be included in the next SEND Communications please do not hesitate to get in touch.

Next Issue: SEND Services Communications Summer 2

Submit your updates by 7th July to be included!

Please use the below emails

Sam: samantha.house@walsall.gov.uk

Local Offer: localoffer@walsall.gov.uk



Thank you for being part of the Walsall SEND community!



Walsall Council

